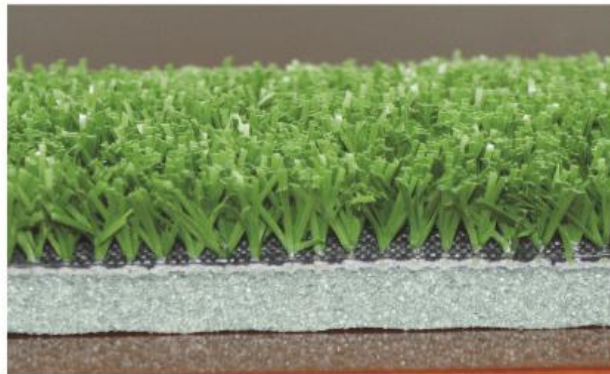
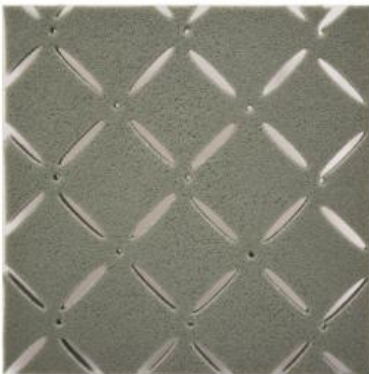


## **CYG-Good Shock Absorbing Foam for Artificial Turf**

**Artificial Turf With Good Shock Absorbing Foam** is emerged based on the market demand. It's neat , reusable, in favor of environmental protection , easy laying with short installation period and other merits as below:

- ◆ Easy installation, because of light weight and easy handling. Only one day needed to finish the laying of a standard-sized field.
- ◆ Waterproof , because of closed cell foam structure, its installation/laying will not be affected by the weather.
- ◆ Excellent shock absorption and ball rebound , keeps sports performance, Increased safety and softness.
- ◆ Resistant to mold, rot ,bacteria and mildew, it have long usage life.
- ◆ The unique design offers excellent drainage property, avoids thermal expansion & cold shrinkage, keeps the dimension stable.
- ◆ Size can be customized, which reduces waste and labor cost to utmost.

**CYG-Good Shock Absorbing Foam ( Chemical Cross-linked Polyethylene Foam )** is the perfect material as shock absorbing pad for artificial turf ,which can help to prevent and reduce injuries and traumas. It is low moisture permeability and high buoyancy combined with a smooth, delicate feel and superior physical and chemical properties.



CYG-Good Shock Absorbing Foam	
Density	33 / 40 / 50 / 70 kg/m <sup>3</sup>
Roll size	Customized
Thickness	8mm, 10mm, 12mm
Foam Color	black, gray, blue, green or others
Delivery Time	15~20 days
Certification	SGS , ISO9001, ISO14000



## Different shapes of foam and artificial grass



### Applications:

Artificial Grass Ideal for all kinds outdoor lawn and landscape applications, Such as commercial and residential courtyard , private club / Leisure venues, factories and mines, resorts, Nursery , school Tennis / Football Field.



**CYG** 长园

CYG TEFA CO., LTD

Tel: 0086-755-26502622 Fax: 0086-755-26631759

Email: lili@cyg.com Web: www.xpe-foam.com www.cygtefa.com

Address: 4th Floor, Block E, CYG Production Base, Guangming Street, Guangming New Area, Shenzhen, Guangdong, China. (518107)